

# THE Blue EDGE Bulletin

December 2022

## Term 4 Review: Thank you!


What an amazing term this has been. Term 4 saw 153 students graduate, a testament to our amazing teams on the ground.

Thank you to all of our Facilitators, Police Members, Fitness Trainers School Leads and Caterers for making Blue EDGE a success. We couldn't do it without you!

The Longest Day was undoubtedly the highlight of the term. Unfortunately, due to flooding near the Murray, Shepparton's Longest Day was cancelled. However, all other sites managed to run, climb and challenge themselves at a fun filled day!

As part of our continued improvement, this term we conducted Focus Groups with some of our participating schools. It was fantastic to get an insight into what the students liked about Blue EDGE and also hear some suggestions for improvement.

Overall the feedback was extremely positive, with one student stating

 *Each component had a different impact. The fitness was fun and challenging, the breakfast question improved my communication and the workshops enhanced my collaboration skills.*



Blue EDGE Bendigo



Blue EDGE Coburg

## We Need Your Help!

Did your child/ward participate in Blue EDGE this term?

Are you a School Lead, Police Member or Fitness Trainer who attended the program?

Have you filled out the Feedback Survey?

The Post Program Surveys are important for the continuation of Blue EDGE. The responses form part of the program evaluation which will in turn, help us to receive further grants in future years.

Your support in completing the below surveys is greatly appreciated!

**Families:** [https://www.surveymonkey.com/r/BE\\_Fam\\_T4\\_2022](https://www.surveymonkey.com/r/BE_Fam_T4_2022)

**Community Member:** [https://www.surveymonkey.com/r/BE\\_Comm\\_T4\\_2022](https://www.surveymonkey.com/r/BE_Comm_T4_2022)



Blue EDGE Churchill

## 2022 Wrapped!

For the first time, we managed to run 4 full terms of Blue EDGE! Thank you to our wonderful stakeholders across the year who have contributed to making Blue EDGE a rewarding experience for the students.

Blue EDGE reach in 2022:

**20** schools

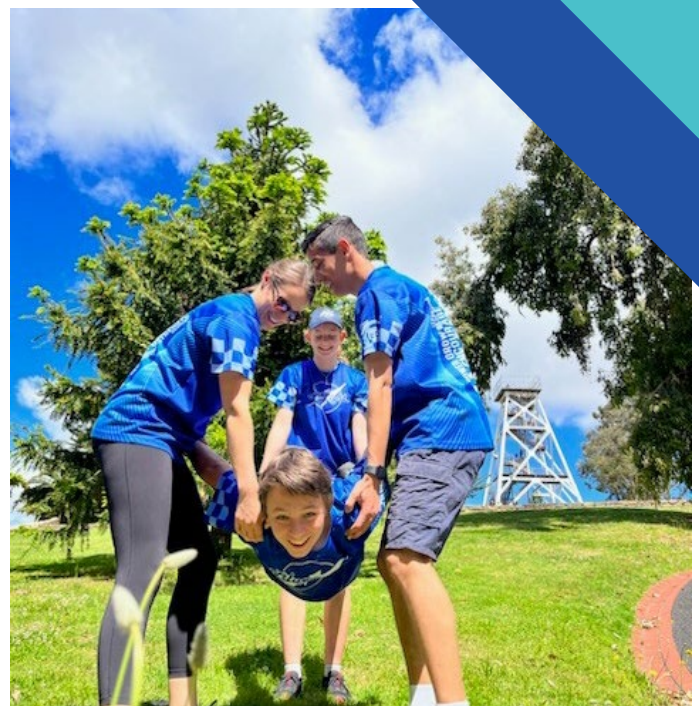
**560** sessions

**37** Longest Days

**601** Students Graduated

**252** Police Members engaged

**1,128** hours of Blue EDGE delivered



Blue EDGE Bendigo



# Spotlight!

## Kim - Woodmans Hill Facilitator

**What's the best part about being involved in Blue EDGE?**

Connecting with young people and seeing them develop new friendships and skills, all the while supporting and challenging each other.

**If you could invent something, what would it be?**

I may regret it, but I would love to invent a dog translator.

**If you could snap your fingers and become an expert at something, what would it be and why?**

I would love to be multilingual and truly immerse myself in other cultures.

**What advice would you give your teenage self?**

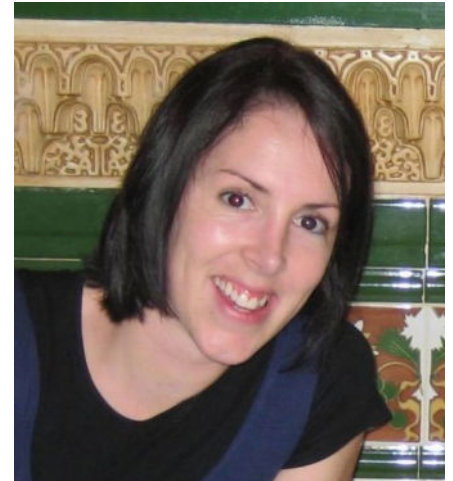
No decision you make now has to be forever.

**If you could become any cartoon character for the day, who would you be and why?**

Leela from Futurama. She's fierce, loves animals and travels the universe.

**What was the first concert you ever went to?**

Alanis Morissette



Blue EDGE Woodmans Hill

## Tales from Blue EDGE

Students are constantly stepping out of their comfort zone at Blue EDGE. Whether it's reading the Acknowledgement of Country, speaking up about their experiences or challenging themselves on the high ropes.

These moments really highlight the benefits of Blue EDGE and what the students can achieve over the course of the program.



*He didn't want to read the acknowledgement in front of the group, but he felt it had given him more confidence! I told him he did awesome and thanked him for stepping out of his comfort zone.*





Blue EDGE Cranbourne



Blue EDGE Portland



Blue EDGE Stawell



Blue EDGE Wonthaggi

## Follow us!



bluelight\_vic



bluelightvic



blue-light-victoria-incorporated

[www.bluelight.org.au](http://www.bluelight.org.au)

[blueedge@bluelight.org.au](mailto:blueedge@bluelight.org.au)

Blue EDGE is a Blue Light Victoria program run in partnership with Victoria Police.

Blue Light Victoria would like to acknowledge and thank the Department of Industry, Science, Energy and Resources and the Alcohol and Drug Foundation for their ongoing support and funding for the Blue EDGE program.



Australian Government  
Department of Industry, Science,  
Energy and Resources



Alcohol  
and Drug  
Foundation

